



Wear View, Hunwick, DL15 0LE
3 Bed - House - End Terrace
£145,000

ROBINSONS
SALES • LETTINGS • AUCTIONS • SURVEYS

Wear View

Hunwick, DL15 0LE

* NO FORWARDING CHAIN *

Nestled in the charming village of Hunwick, Crook, this delightful end-terrace house offers a wonderful opportunity for families seeking a spacious and inviting home. With no forward chain, you can move in with ease and start enjoying all that this property has to offer.

The house features two generous reception rooms, perfect for both entertaining guests and enjoying cosy family evenings. The well-proportioned layout includes three comfortable bedrooms, providing ample space for family members or guests. The bathroom has a four piece suite and the kitchen offers an extensive range of wall, base and drawer units with some integrated appliances.

The internal accommodation comprises; entrance hallway, two reception rooms both having gas fires, one having a back boiler. Kitchen with a range of wall, base and drawer units with integrated hob and oven and fridge/freezer, space for washing machine.

To the first floor there are three bedrooms, all having fitted wardrobes and a family bathroom with four piece suite.

The landing area has built in storage cupboards and a loft hatch with pull down ladder and lighting, the loft is boarded and presents a fantastic opportunity for storage or could even be transformed into a creative area, depending on your needs.

Outside there is a small forecourt garden to the front. At the rear there is a good size yard which has been designed for easy maintenance and has two storage sheds.

Situated in a popular village location, the property boasts lovely countryside views, allowing you to enjoy the beauty of nature right from your home. The surrounding area offers a sense of community and tranquillity, making it an ideal setting for family life. Hunwick village also has a primary school and is on a bus route.

This good-sized family home is ready to welcome its new owners, providing a perfect blend of comfort and potential in a picturesque setting. Don't miss the chance to make this charming property your own.













Agent Notes

Electricity Supply: Mains

Water Supply: Mains

Sewerage: Mains

Heating: Gas central heating

EPC Rating: E

Tenure: Freehold

Council Tax Band: A

Annual Price: £1,701

Broadband

Basic

3 Mbps

Superfast

80 Mbps

Ultrafast 1800 Mbps

Mobile Signal: Average/Good

Disclaimer

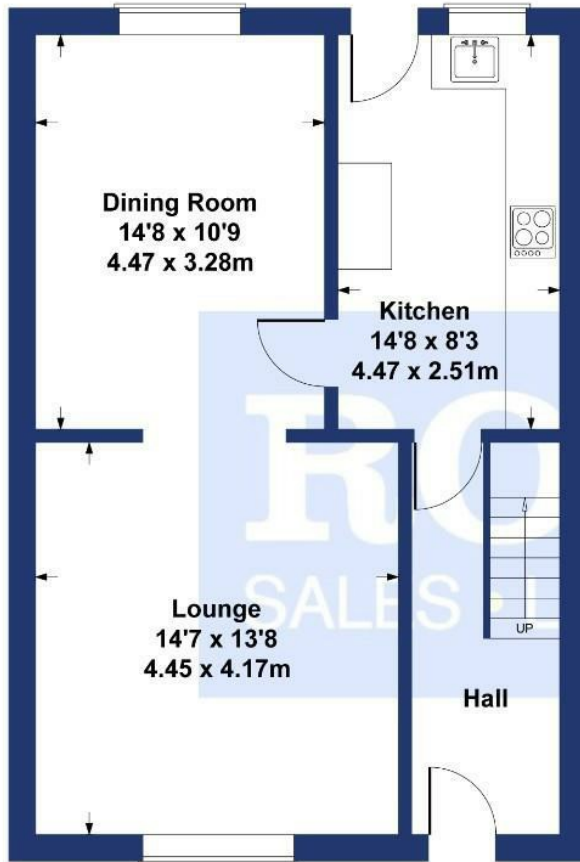
The preceding details have been sourced from the seller and OntheMarket.com. Verification and clarification of this information, along with any further details concerning Material Information parts A, B and C, should be sought from a legal representative or appropriate authorities. Robinsons cannot accept liability for any information provided.



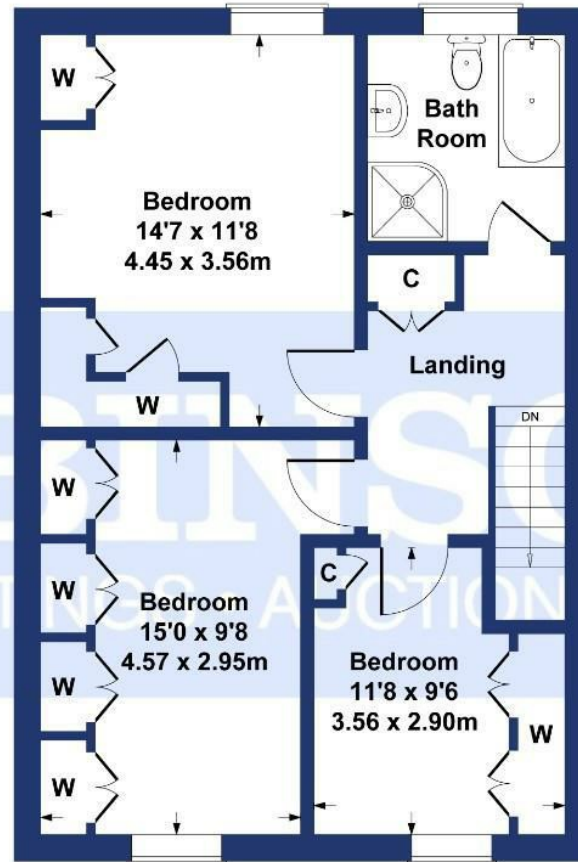


Wear View Hunwick

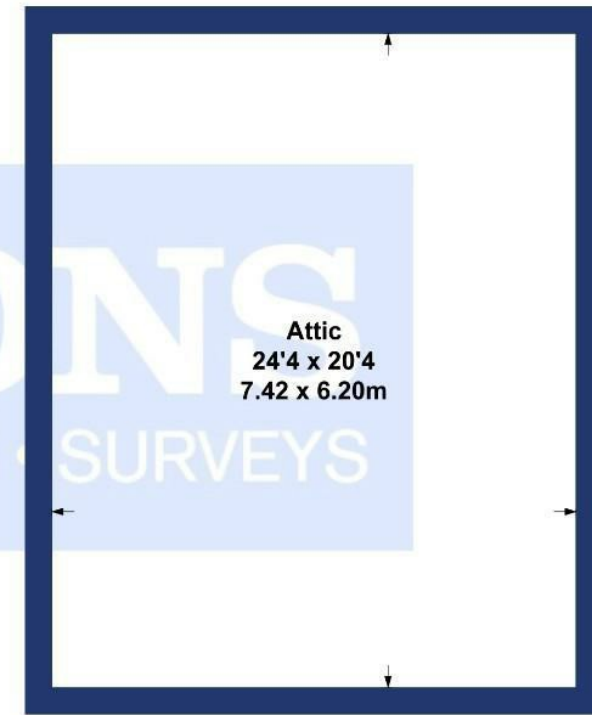
Approximate Gross Internal Area
1635 sq ft - 152 sq m



GROUND FLOOR



FIRST FLOOR



SECOND FLOOR

SKETCH PLAN FOR ILLUSTRATIVE PURPOSES ONLY

All measurements walls, doors, windows, fittings and appliances, their sizes and locations, are approximate only. They cannot be regarded as being a representation by the seller, nor their agent.

Produced by Potterplans Ltd. 2025

Energy Efficiency Rating		
	Current	Potential
Very energy efficient - lower running costs		
(92 plus) A		85
(81-91) B		
(69-80) C		
(55-68) D		
(39-54) E		
(21-38) F	50	
(1-20) G		
Not energy efficient - higher running costs		
England & Wales		EU Directive 2002/91/EC

For clarification we wish to inform prospective purchasers that we have prepared these sales particulars as a general guide. We have not carried out a detailed survey, nor tested the services, appliances and specific fittings. Room sizes should not be relied upon for carpets and furnishings, if there are important matters which are likely to affect your decision to buy, please contact us before viewing the property. Robinsons can recommend financial services, surveying and conveyancing services to sellers and buyers. Robinsons staff may benefit from referral incentives relating to these services.

